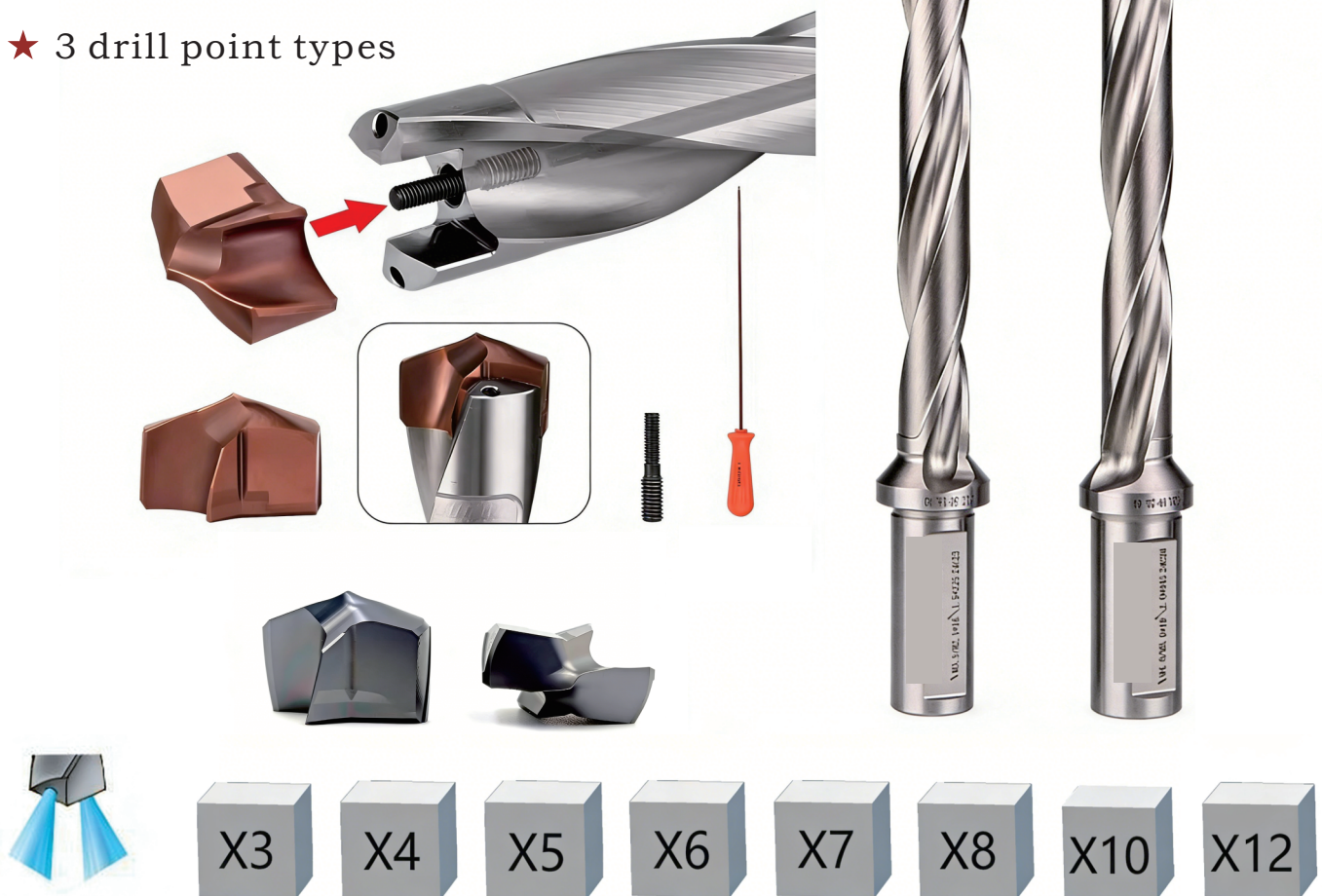


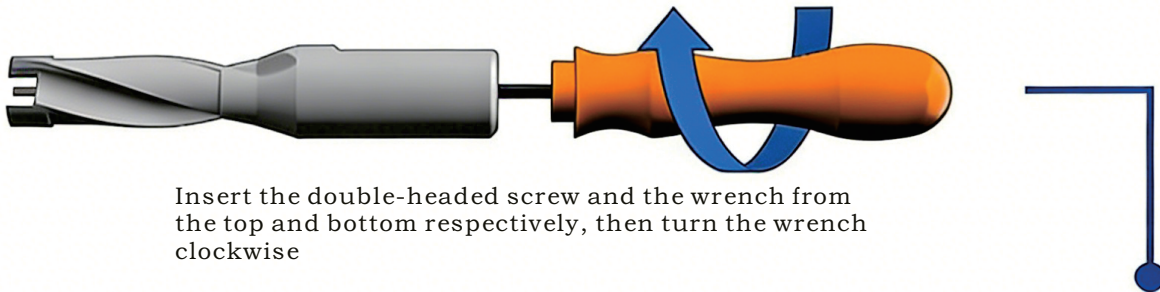
King drilling

- ★ Processing diameter range: 12.5 – 42 mm.
- ★ drilling depth: 3 – 12 × diameter.
- ★ 3 drill point types

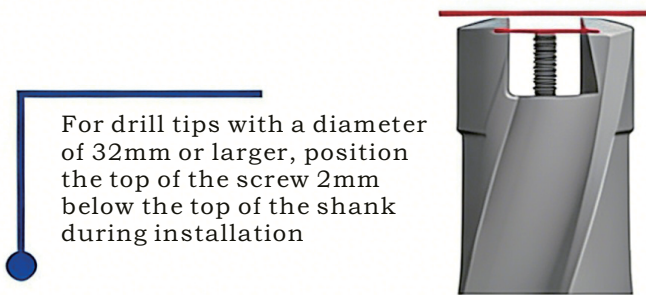


High-Efficiency Drilling, Far Outperforming Traditional Twist Drills
Stable Precision & Excellent Hole Quality
Strong Versatility, Wide Compatibility & Significant Cost Savings

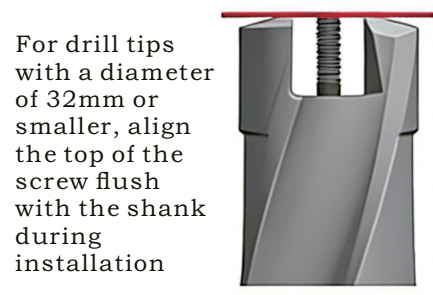
Installation Guide



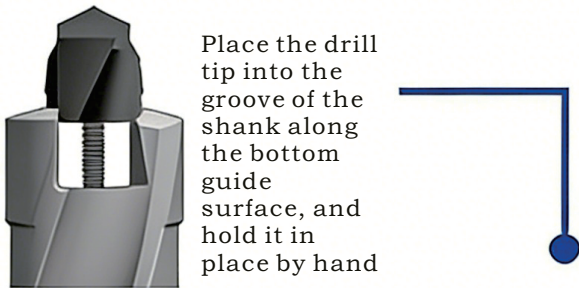
Insert the double-headed screw and the wrench from the top and bottom respectively, then turn the wrench clockwise



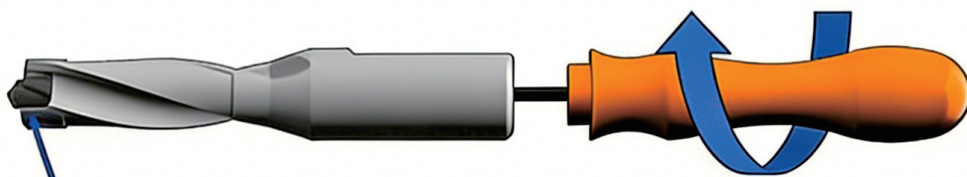
For drill tips with a diameter of 32mm or larger, position the top of the screw 2mm below the top of the shank during installation



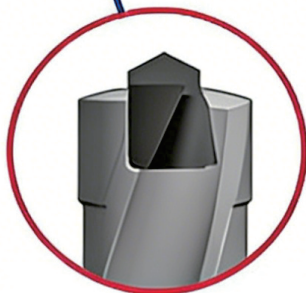
For drill tips with a diameter of 32mm or smaller, align the top of the screw flush with the shank during installation



Place the drill tip into the groove of the shank along the bottom guide surface, and hold it in place by hand



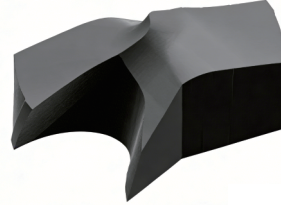
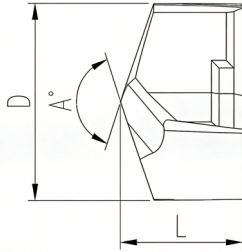
Insert the wrench and turn the screw clockwise until the drill tip is securely fastened to the base.



Note: After installation, inspect whether the drill tip base is fully seated against the shank base. If not fully seated, reinstall the drill tip or replace it.

D(mm)	Tolerance h8
13-18	0/-0.027
>18-30	0/-0.033
>18-40	0/-0.039

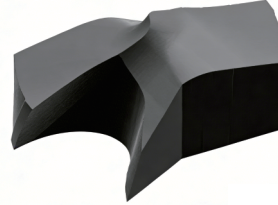
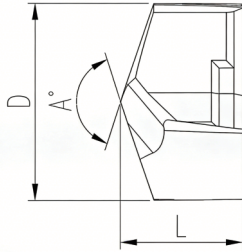
-KS drill tip



Grade	P	M	K	N	S
KZ7125	★	☆	★		
KZ7225		★			★

Designation	A°	L	D	Locking thread
KDEM1230-KS	140°	9.3	12.3	M2.5
KDEM1250-KS	140°	9.3	12.5	M2.5
KDEM1300-KS	140°	9.3	13	M2.5
KDEM1350-KS	140°	9.3	13.5	M2.5
KDEM1400-KS	140°	9.7	14	M2.5
KDEM1450-KS	140°	9.7	14.5	M2.5
KDEM1500-KS	140°	10.3	15	M2.5
KDEM1550-KS	140°	10.3	15.5	M2.5
KDEM1600-KS	140°	11.3	16	M2.5
KDEM1650-KS	140°	11.3	16.5	M2.5
KDEM1700-KS	140°	11.3	17	M2.5
KDEM1750-KS	140°	11.3	17.5	M2.5
KDEM1800-KS	140°	11.3	18	M2.5
KDEM1850-KS	140°	12.3	18.5	M3.0
KDEM1900-KS	140°	12.3	19	M3.0
KDEM1950-KS	140°	12.3	19.5	M3.0
KDEM2000-KS	140°	13.3	20	M3.0
KDEM2050-KS	140°	13.3	20.5	M3.0
KDEM2100-KS	140°	13.3	21	M3.0
KDEM2150-KS	140°	13.3	21.5	M3.0
KDEM2200-KS	140°	13.3	22	M3.0
KDEM2250-KS	140°	14.3	22.5	M3.0
KDEM2300-KS	140°	14.3	23	M3.0
KDEM2350-KS	140°	14.3	23.5	M3.0
KDEM2400-KS	140°	14.3	24	M3.0
KDEM2450-KS	140°	15.3	24.5	M4.0
KDEM2500-KS	140°	15.3	25	M4.0
KDEM2550-KS	140°	15.3	25.5	M4.0
KDEM2600-KS	140°	15.3	26	M4.0
KDEM2650-KS	140°	16.3	26.5	M4.0
KDEM2700-KS	140°	16.3	27	M4.0

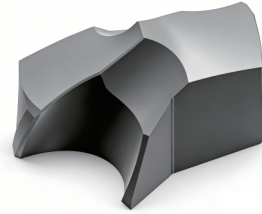
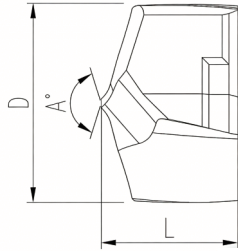
-KS drill tip



Grade	P	M	K	N	S
KZ7125	★	☆	★		
KZ7225		★			★

Designation	A°	L	D	Locking thread
KDEM2750-KS	140°	16.3	27.5	M4.0
KDEM2800-KS	140°	16.3	28	M4.0
KDEM2850-KS	140°	18.6	28.5	M5.0
KDEM2900-KS	140°	18.6	29	M5.0
KDEM2950-KS	140°	18.6	29.5	M5.0
KDEM3000-KS	140°	18.6	30	M5.0
KDEM3050-KS	140°	19.7	30.5	M5.0
KDEM3100-KS	140°	19.7	31	M5.0
KDEM3150-KS	140°	19.7	31.5	M5.0
KDEM3200-KS	140°	19.7	32	M5.0
KDEM3250-KS	140°	20.8	32.5	M6.0
KDEM3300-KS	140°	20.8	33	M6.0
KDEM3350-KS	140°	20.8	33.5	M6.0
KDEM3400-KS	140°	20.8	34	M6.0
KDEM3450-KS	140°	20.8	34.5	M6.0
KDEM3500-KS	140°	20.8	35	M6.0
KDEM3550-KS	140°	20.8	35.5	M6.0
KDEM3600-KS	140°	20.8	36	M6.0
KDEM3650-KS	140°	23	36.5	M6.0
KDEM3700-KS	140°	23	37	M6.0
KDEM3750-KS	140°	23	37.5	M6.0
KDEM3800-KS	140°	23	38	M6.0
KDEM3850-KS	140°	23	38.5	M6.0
KDEM3900-KS	140°	23	39	M6.0
KDEM3950-KS	140°	23	39.5	M6.0
KDEM4000-KS	140°	23	40	M6.0
KDEM4050-KS	140°	23	40.5	M6.0
KDEM4100-KS	140°	23	41	M6.0
KDEM4150-KS	140°	23	41.5	M6.0
KDEM4200-KS	140°	23	42	M6.0

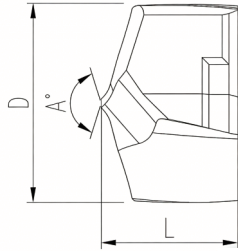
-KH drill tip



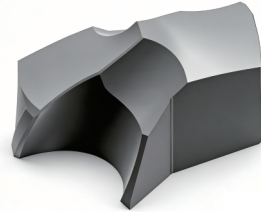
Grade	P	M	K	N	S
KZ7125	★		★		
KZ7225					

Designation	A°	L	D	Locking thread
KDEM1230-KH	140°	10.3	12.3	M2.5
KDEM1250-KH	140°	10.3	12.5	M2.5
KDEM1300-KH	140°	10.3	13	M2.5
KDEM1350-KH	140°	10.3	13.5	M2.5
KDEM1400-KH	140°	10.8	14	M2.5
KDEM1450-KH	140°	10.8	14.5	M2.5
KDEM1500-KH	140°	10.8	15	M2.5
KDEM1550-KH	140°	10.8	15.5	M2.5
KDEM1600-KH	140°	11.8	16	M2.5
KDEM1650-KH	140°	11.8	16.5	M2.5
KDEM1700-KH	140°	11.8	17	M2.5
KDEM1750-KH	140°	11.8	17.5	M2.5
KDEM1800-KH	140°	11.8	18	M2.5
KDEM1850-KH	140°	12.8	18.5	M3.0
KDEM1900-KH	140°	12.8	19	M3.0
KDEM1950-KH	140°	12.8	19.5	M3.0
KDEM2000-KH	140°	14.3	20	M3.0
KDEM2050-KH	140°	14.3	20.5	M3.0
KDEM2100-KH	140°	14.3	21	M3.0
KDEM2150-KH	140°	14.3	21.5	M3.0
KDEM2200-KH	140°	14.3	22	M3.0
KDEM2250-KH	140°	15	22.5	M3.0
KDEM2300-KH	140°	15	23	M3.0
KDEM2350-KH	140°	15	23.5	M3.0
KDEM2400-KH	140°	15	24	M3.0
KDEM2450-KH	140°	16.4	24.5	M4.0
KDEM2500-KH	140°	16.4	25	M4.0
KDEM2550-KH	140°	16.4	25.5	M4.0
KDEM2600-KH	140°	16.4	26	M4.0
KDEM2650-KH	140°	17.4	26.5	M4.0
KDEM2700-KH	140°	17.4	27	M4.0

-KH drill tip

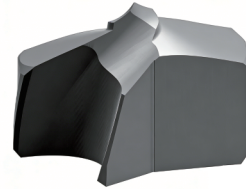
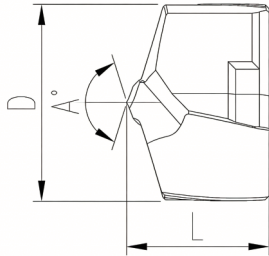


Grade	P	M	K	N	S
KZ7125	★		★		
KZ7225					



Designation	A°	L	D	Locking thread
KDEM2750-KH	140°	17.4	27.5	M4.0
KDEM2800-KH	140°	17.4	28	M4.0
KDEM2850-KH	140°	18.4	28.5	M5.0
KDEM2900-KH	140°	18.4	29	M5.0
KDEM2950-KH	140°	18.4	29.5	M5.0
KDEM3000-KH	140°	18.4	30	M5.0
KDEM3050-KH	140°	20.2	30.5	M5.0
KDEM3100-KH	140°	20.2	31	M5.0
KDEM3150-KH	140°	20.2	31.5	M5.0
KDEM3200-KH	140°	20.2	32	M5.0
KDEM3250-KH	140°	22	32.5	M6.0
KDEM3300-KH	140°	22	33	M6.0
KDEM3350-KH	140°	22	33.5	M6.0
KDEM3400-KH	140°	22	34	M6.0
KDEM3450-KH	140°	22	34.5	M6.0
KDEM3500-KH	140°	22	35	M6.0
KDEM3550-KH	140°	22	35.5	M6.0
KDEM3600-KH	140°	22	36	M6.0
KDEM3650-KH	140°	24	36.5	M6.0
KDEM3700-KH	140°	24	37	M6.0
KDEM3750-KH	140°	24	37.5	M6.0
KDEM3800-KH	140°	24	38	M6.0
KDEM3850-KH	140°	24	38.5	M6.0
KDEM3900-KH	140°	24	39	M6.0
KDEM3950-KH	140°	24	39.5	M6.0
KDEM4000-KH	140°	24	40	M6.0
KDEM4050-KH	140°	24	40.5	M6.0
KDEM4100-KH	140°	24	41	M6.0
KDEM4150-KH	140°	24	41.5	M6.0
KDEM4200-KH	140°	24	42	M6.0

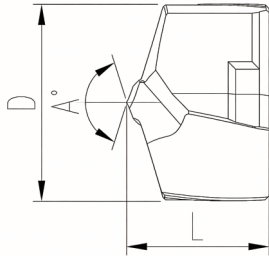
-KZ drill tip



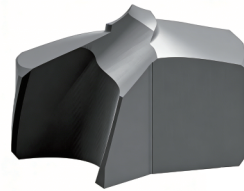
Grade	P	M	K	N	S
KZ7125	★		★		
KZ7225		★			

Designation	A°	L	D	Locking thread
KDEM1230-KZ	140°	10.3	12.3	M2.5
KDEM1250-KZ	140°	10.3	12.5	M2.5
KDEM1300-KZ	140°	10.3	13	M2.5
KDEM1350-KZ	140°	10.3	13.5	M2.5
KDEM1400-KZ	140°	10.8	14	M2.5
KDEM1450-KZ	140°	10.8	14.5	M2.5
KDEM1500-KZ	140°	10.8	15	M2.5
KDEM1550-KZ	140°	10.8	15.5	M2.5
KDEM1600-KZ	140°	11.8	16	M2.5
KDEM1650-KZ	140°	11.8	16.5	M2.5
KDEM1700-KZ	140°	11.8	17	M2.5
KDEM1750-KZ	140°	11.8	17.5	M2.5
KDEM1800-KZ	140°	11.8	18	M2.5
KDEM1850-KZ	140°	12.8	18.5	M3.0
KDEM1900-KZ	140°	12.8	19	M3.0
KDEM1950-KZ	140°	12.8	19.5	M3.0
KDEM2000-KZ	140°	14.3	20	M3.0
KDEM2050-KZ	140°	14.3	20.5	M3.0
KDEM2100-KZ	140°	14.3	21	M3.0
KDEM2150-KZ	140°	14.3	21.5	M3.0
KDEM2200-KZ	140°	14.3	22	M3.0
KDEM2250-KZ	140°	15	22.5	M3.0
KDEM2300-KZ	140°	15	23	M3.0
KDEM2350-KZ	140°	15	23.5	M3.0
KDEM2400-KZ	140°	15	24	M3.0
KDEM2450-KZ	140°	16.4	24.5	M4.0
KDEM2500-KZ	140°	16.4	25	M4.0
KDEM2550-KZ	140°	16.4	25.5	M4.0
KDEM2600-KZ	140°	16.4	26	M4.0
KDEM2650-KZ	140°	17.4	26.5	M4.0
KDEM2700-KZ	140°	17.4	27	M4.0

-KZ drill tip



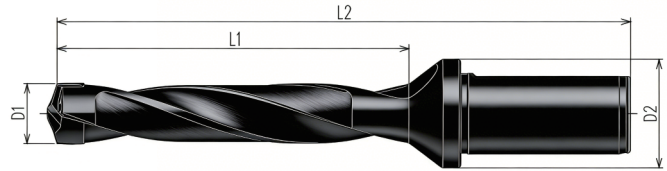
Grade	P	M	K	N	S
KZ7125	★		★		
KZ7225		★			



Designation	A°	L	D	Locking thread
KDEM2750-KZ	140°	17.4	27.5	M4.0
KDEM2800-KZ	140°	17.4	28	M4.0
KDEM2850-KZ	140°	18.4	28.5	M5.0
KDEM2900-KZ	140°	18.4	29	M5.0
KDEM2950-KZ	140°	18.4	29.5	M5.0
KDEM3000-KZ	140°	18.4	30	M5.0
KDEM3050-KZ	140°	20.2	30.5	M5.0
KDEM3100-KZ	140°	20.2	31	M5.0
KDEM3150-KZ	140°	20.2	31.5	M5.0
KDEM3200-KZ	140°	20.2	32	M5.0
KDEM3250-KZ	140°	22	32.5	M6.0
KDEM3300-KZ	140°	22	33	M6.0
KDEM3350-KZ	140°	22	33.5	M6.0
KDEM3400-KZ	140°	22	34	M6.0
KDEM3450-KZ	140°	22	34.5	M6.0
KDEM3500-KZ	140°	22	35	M6.0
KDEM3550-KZ	140°	22	35.5	M6.0
KDEM3600-KZ	140°	22	36	M6.0
KDEM3650-KZ	140°	24	36.5	M6.0
KDEM3700-KZ	140°	24	37	M6.0
KDEM3750-KZ	140°	24	37.5	M6.0
KDEM3800-KZ	140°	24	38	M6.0
KDEM3850-KZ	140°	24	38.5	M6.0
KDEM3900-KZ	140°	24	39	M6.0
KDEM3950-KZ	140°	24	39.5	M6.0
KDEM4000-KZ	140°	24	40	M6.0
KDEM4050-KZ	140°	24	40.5	M6.0
KDEM4100-KZ	140°	24	41	M6.0
KDEM4150-KZ	140°	24	41.5	M6.0
KDEM4200-KZ	140°	24	42	M6.0

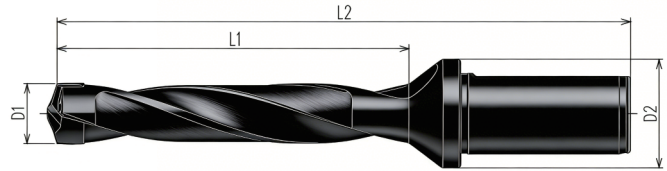
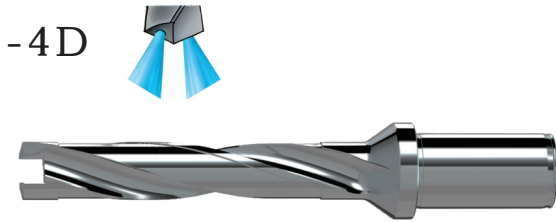
King drilling

-3D



Designation	D1-D1(max)	D2	Handle dia.	Handle length	L1	L2	screw	wrench
HKD125R03W16M	12.50-12.99	23	16	45	52	111.6	FS252513	T5
HKD130R03W16M	13.00-13.50	23	16	45	52	111.6	FS252513	T5
HKD136R03W16M	13.51-13.99	23	16	45	56	114.6	FS253014	T6
HKD140R03W16M	14.00-14.50	23	16	45	56	114.6	FS253014	T6
HKD146R03W20M	14.51-14.99	30	20	50	60	129.1	FS253014	T6
HKD150R03W20M	15.00-15.87	30	20	50	60	129.1	FS253014	T6
HKD160R03W20M	15.88-16.99	30	20	50	68	136	FS253516	H1.5
HKD170R03W20M	17.00-17.50	30	20	50	72	139.1	FS253516	H1.5
HKD180R03W20M	17.51-18.00	30	20	50	72	139.1	FS253516	H1.5
HKD181R03W25M	18.01-18.99	35	25	56	76	152.7	FS304019	H2.0
HKD190R03W25M	19.00-19.49	35	25	56	80	155.8	FS304019	H2.0
HKD199R03W25M	19.50-19.99	35	25	56	80	155.8	FS304019	H2.0
HKD200R03W25M	19.00-20.49	35	25	56	80	158.9	FS304019	H2.0
HKD210R03W25M	20.50-21.00	35	25	56	88	162.2	FS304019	H2.0
HKD220R03W25M	21.01-22.00	35	25	56	88	162.2	FS304019	H2.0
HKD221R03W25M	22.01-22.99	35	25	56	92	165.1	FS304019	H2.0
HKD230R03W25M	23.00-23.49	35	25	56	96	168.3	FS304019	H2.0
HKD240R03W25M	23.50-24.00	35	25	56	96	168.3	FS304019	H2.0
HKD241R03W32M	24.01-24.99	40	32	60	100	183.4	FS405023	H2.5
HKD250R03W32M	25.00-25.49	40	32	60	104	186.6	FS405023	H2.5
HKD260R03W32M	25.50-26.00	40	32	60	104	186.6	FS405023	H2.5
HKD261R03W32M	26.01-26.99	40	32	60	108	189.9	FS405023	H2.5
HKD270R03W32M	27.00-27.49	40	32	60	112	192.8	FS405023	H2.5
HKD280R03W32M	27.50-28.00	40	32	60	112	192.8	FS405023	H2.5
HKD281R03W32M	28.01-28.99	40	32	60	116	196.9	FS506028	H3.0
HKD290R03W32M	29.00-29.49	40	32	60	120	199.2	FS506028	H3.0
HKD300R03W32M	29.49-30.00	40	32	60	120	199.2	FS506028	H3.0
HKD301R03W32M	30.01-30.99	40	32	60	124	202.4	FS506028	H3.0
HKD310R03W32M	31.00-31.49	40	32	60	128	205.5	FS506028	H3.0
HKD320R03W32M	31.50-32.00	40	32	60	128	205.5	FS506028	H3.0
HKD321R03W32M	32.01-32.99	40	32	60	136	229.6	FS600632	H3.0
HKD330R03W40M	33.00-33.99	50	40	70	136	229.6	FS606032	H3.0
HKD340R03W40M	34.00-34.99	50	40	70	144	235.8	FS606032	H3.0
HKD350R03W40M	35.00-35.49	50	40	70	144	235.8	FS606032	H3.0
HKD360R03W40M	35.50-36.00	50	40	70	144	235.8	FS606032	H3.0
HKD361R03W40M	36.01-36.99	50	40	70	152	242	FS606032	H3.0
HKD370R03W40M	37.00-37.99	50	40	70	152	242	FS606032	H3.0
HKD380R03W40M	38.00-38.99	50	40	70	160	248.3	FS606032	H3.0
HKD390R03W40M	39.00-39.99	50	40	70	160	248.3	FS606032	H3.0
HKD400R03W40M	40.00-40.99	50	40	70	160	248.3	FS606032	H3.0
HKD410R03W40M	41.00-41.99	50	40	70	160	248.3	FS606032	H3.0

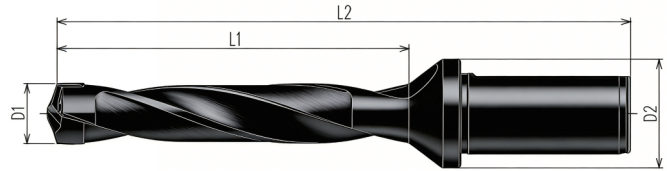
King drilling



Designation	D1-D1(max)	D2	Handle dia.	Handle length	L1	L2	screw	wrench
HKD125R04W16M	12.50-12.99	23	16	45	65	124.6	FS252513	T5
HKD130R04W16M	13.00-13.50	23	16	45	65	124.6	FS252513	T5
HKD136R04W16M	13.51-13.99	23	16	45	70	128.6	FS253014	T6
HKD140R04W16M	14.00-14.50	23	16	45	70	128.6	FS253014	T6
HKD146R04W20M	14.51-14.99	30	20	50	75	144.1	FS253014	T6
HKD150R04W20M	15.00-15.87	30	20	50	75	144.1	FS253014	T6
HKD160R04W20M	15.88-16.99	30	20	50	85	153	FS253516	H1.5
HKD170R04W20M	17.00-17.50	30	20	50	90	157.1	FS253516	H1.5
HKD180R04W20M	17.51-18.00	30	20	50	90	157.1	FS253516	H1.5
HKD181R04W25M	18.01-18.99	35	25	56	95	171.7	FS304019	H2.0
HKD190R04W25M	19.00-19.49	35	25	56	100	175.8	FS304019	H2.0
HKD199R04W25M	19.50-19.99	35	25	56	100	175.8	FS304019	H2.0
HKD200R04W25M	19.00-20.49	35	25	56	105	179.9	FS304019	H2.0
HKD210R04W25M	20.50-21.00	35	25	56	110	184.2	FS304019	H2.0
HKD220R04W25M	21.01-22.00	35	25	56	110	184.2	FS304019	H2.0
HKD221R04W25M	22.01-22.99	35	25	56	115	188.1	FS304019	H2.0
HKD230R04W25M	23.00-23.49	35	25	56	120	192.3	FS304019	H2.0
HKD240R04W25M	23.50-24.00	35	25	56	120	192.3	FS304019	H2.0
HKD241R04W32M	24.01-24.99	40	32	60	125	208.4	FS405023	H2.5
HKD250R04W32M	25.00-25.49	40	32	60	130	212.6	FS405023	H2.5
HKD260R04W32M	25.50-26.00	40	32	60	130	212.6	FS405023	H2.5
HKD261R04W32M	26.01-26.99	40	32	60	135	216.9	FS405023	H2.5
HKD270R04W32M	27.00-27.49	40	32	60	140	220.8	FS405023	H2.5
HKD280R04W32M	27.50-28.00	40	32	60	140	220.8	FS405023	H2.5
HKD281R04W32M	28.01-28.99	40	32	60	145	225.9	FS506028	H3.0
HKD290R04W32M	29.00-29.49	40	32	60	145	222.9	FS506028	H3.0
HKD300R04W32M	29.49-30.00	40	32	60	145	222.9	FS506028	H3.0
HKD301R04W32M	30.01-30.99	40	32	60	155	233.4	FS506028	H3.0
HKD310R04W32M	31.00-31.49	40	32	60	160	237.5	FS506028	H3.0
HKD320R04W32M	31.50-32.00	40	32	60	160	237.5	FS506028	H3.0
HKD321R04W40M	32.01-32.99	50	40	70	170	263.8	FS600632	H3.0
HKD330R04W40M	33.00-33.99	50	40	70	170	263.6	FS600632	H3.0
HKD340R04W40M	34.00-34.99	50	40	70	180	271.8	FS600632	H3.0
HKD350R04W40M	35.00-35.49	50	40	70	180	271.8	FS600632	H3.0
HKD360R04W40M	35.50-36.00	50	40	70	180	271.8	FS600632	H3.0
HKD361R04W40M	36.01-36.99	50	40	70	190	280	FS600632	H3.0
HKD370R04W40M	37.00-37.99	50	40	70	190	280	FS600632	H3.0
HKD380R04W40M	38.00-38.99	50	40	70	200	288.3	FS600632	H3.0
HKD390R04W40M	39.00-39.99	50	40	70	200	288.3	FS600632	H3.0
HKD400R04W40M	40.00-40.99	50	40	70	200	288.3	FS600632	H3.0
HKD410R04W40M	41.00-41.99	50	40	70	200	288.3	FS600632	H3.0

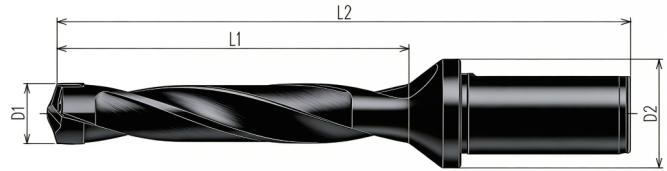
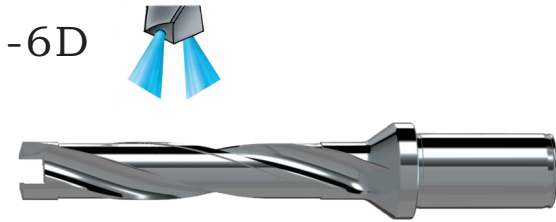
King drilling

-5D



Designation	D1-D1(max)	D2	Handle dia.	Handle length	L1	L2	screw	wrench
HKD125R05W16M	12.50-12.99	23	16	45	78	137.6	FS252513	T5
HKD130R05W16M	13.00-13.50	23	16	45	78	137.6	FS252513	T5
HKD136R05W16M	13.51-13.99	23	16	45	84	142.6	FS253014	T6
HKD140R05W16M	14.00-14.50	23	16	45	84	142.6	FS253014	T6
HKD146R05W20M	14.51-14.99	30	20	50	90	159.1	FS253014	T6
HKD150R05W20M	15.00-15.87	30	20	50	90	159.1	FS253014	T6
HKD160R05W20M	15.88-16.99	30	20	50	102	170	FS253516	H1.5
HKD170R05W20M	17.00-17.50	30	20	50	108	175.1	FS253516	H1.5
HKD180R05W20M	17.51-18.00	30	20	50	108	175.1	FS253516	H1.5
HKD181R05W25M	18.01-18.99	35	25	56	114	190.7	FS304019	H2.0
HKD190R05W25M	19.00-19.49	35	25	56	120	195.8	FS304019	H2.0
HKD199R05W25M	19.50-19.99	35	25	56	120	195.8	FS304019	H2.0
HKD200R05W25M	19.00-20.49	35	25	56	126	200.9	FS304019	H2.0
HKD210R05W25M	20.50-21.00	35	25	56	132	206.2	FS304019	H2.0
HKD220R05W25M	21.01-22.00	35	25	56	132	206.2	FS304019	H2.0
HKD221R05W25M	22.01-22.99	35	25	56	138	211.1	FS304019	H2.0
HKD230R05W25M	23.00-23.49	35	25	56	144	216.3	FS304019	H2.0
HKD240R05W25M	23.50-24.00	35	25	56	144	216.3	FS304019	H2.0
HKD241R05W32M	24.01-24.99	40	32	60	150	233.4	FS405023	H2.5
HKD250R05W32M	25.00-25.49	40	32	60	156	238.6	FS405023	H2.5
HKD260R05W32M	25.50-26.00	40	32	60	156	238.6	FS405023	H2.5
HKD261R05W32M	26.01-26.99	40	32	60	162	243.9	FS405023	H2.5
HKD270R05W32M	27.00-27.49	40	32	60	168	248.8	FS405023	H2.5
HKD280R05W32M	27.50-28.00	40	32	60	168	248.8	FS405023	H2.5
HKD281R05W32M	28.01-28.99	40	32	60	174	254.9	FS506028	H3.0
HKD290R05W32M	29.00-29.49	40	32	60	170	259.2	FS506028	H3.0
HKD300R05W32M	29.49-30.00	40	32	60	170	259.2	FS506028	H3.0
HKD301R05W32M	30.01-30.99	40	32	60	186	264.4	FS506028	H3.0
HKD310R05W32M	31.00-31.49	40	32	60	192	269.5	FS506028	H3.0
HKD320R05W32M	31.50-32.00	40	32	60	192	269.5	FS506028	H3.0
HKD321R05W40M	32.01-32.99	50	40	70	204	297.8	FS600632	H3.0
HKD330R05W40M	33.00-33.99	50	40	70	204	297.6	FS600632	H3.0
HKD340R05W40M	34.00-34.99	50	40	70	216	307.8	FS600632	H3.0
HKD350R05W40M	35.00-35.49	50	40	70	216	307.8	FS600632	H3.0
HKD360R05W40M	35.50-36.00	50	40	70	216	307.8	FS600632	H3.0
HKD361R05W40M	36.01-36.99	50	40	70	228	318	FS600632	H3.0
HKD370R05W40M	37.00-37.99	50	40	70	228	318	FS600632	H3.0
HKD380R05W40M	38.00-38.99	50	40	70	240	328.3	FS600632	H3.0
HKD390R05W40M	39.00-39.99	50	40	70	240	328.3	FS600632	H3.0
HKD400R05W40M	40.00-40.99	50	40	70	240	328.3	FS600632	H3.0
HKD410R05W40M	41.00-41.99	50	40	70	240	328.3	FS600632	H3.0

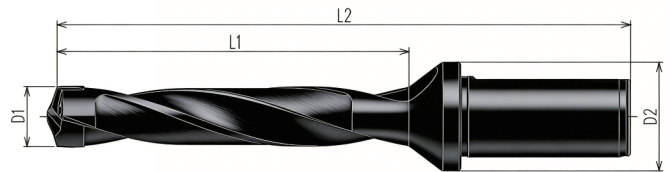
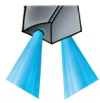
King drilling



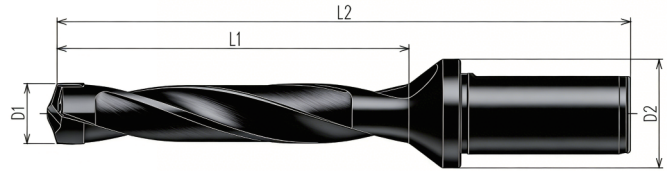
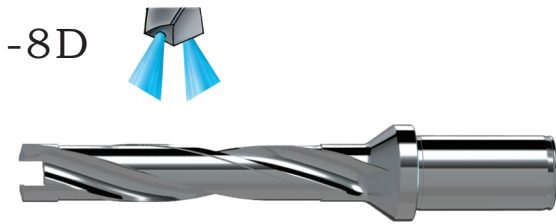
Designation	D1-D1(max)	D2	Handle dia.	Handle length	L1	L2	screw	wrench
HKD125R06W16M	12.50-12.99	23	16	45	91	150.6	FS252513	T5
HKD130R06W16M	13.00-13.50	23	16	45	91	150.6	FS252513	T5
HKD136R06W16M	13.51-13.99	23	16	45	98	156.6	FS253014	T6
HKD140R06W16M	14.00-14.50	23	16	45	98	156.6	FS253014	T6
HKD146R06W20M	14.51-14.99	30	20	50	105	174.1	FS253014	T6
HKD150R06W20M	15.00-15.87	30	20	50	105	174.1	FS253014	T6
HKD160R06W20M	15.88-16.99	30	20	50	119	187	FS253516	H1.5
HKD170R06W20M	17.00-17.50	30	20	50	126	193.1	FS253516	H1.5
HKD180R06W20M	17.51-18.00	30	20	50	126	193.1	FS253516	H1.5
HKD181R06W25M	18.01-18.99	35	25	56	133	209.7	FS304019	H2.0
HKD190R06W25M	19.00-19.49	35	25	56	140	215.8	FS304019	H2.0
HKD199R06W25M	19.50-19.99	35	25	56	140	215.8	FS304019	H2.0
HKD200R06W25M	19.00-20.49	35	25	56	147	221.9	FS304019	H2.0
HKD210R06W25M	20.50-21.00	35	25	56	154	228.2	FS304019	H2.0
HKD220R06W25M	21.01-22.00	35	25	56	154	228.2	FS304019	H2.0
HKD221R06W25M	22.01-22.99	35	25	56	161	234.1	FS304019	H2.0
HKD230R06W25M	23.00-23.49	35	25	56	168	240.3	FS304019	H2.0
HKD240R06W25M	23.50-24.00	35	25	56	168	240.3	FS304019	H2.0
HKD241R06W32M	24.01-24.99	40	32	60	175	258.4	FS405023	H2.5
HKD250R06W32M	25.00-25.49	40	32	60	182	264.6	FS405023	H2.5
HKD260R06W32M	25.50-26.00	40	32	60	182	264.6	FS405023	H2.5
HKD261R06W32M	26.01-26.99	40	32	60	189	270.8	FS405023	H2.5
HKD270R06W32M	27.00-27.49	40	32	60	196	276.8	FS405023	H2.5
HKD280R06W32M	27.50-28.00	40	32	60	196	276.8	FS405023	H2.5
HKD281R06W32M	28.01-28.99	40	32	60	203	283.9	FS506028	H3.0
HKD290R06W32M	29.00-29.49	40	32	60	196	289.2	FS506028	H3.0
HKD300R06W32M	29.49-30.00	40	32	60	196	289.2	FS506028	H3.0
HKD301R06W32M	30.01-30.99	40	32	60	217	295.4	FS506028	H3.0
HKD310R06W32M	31.00-31.49	40	32	60	224	301.5	FS506028	H3.0
HKD320R06W32M	31.50-32.00	40	32	60	224	301.5	FS506028	H3.0
HKD321R06W40M	32.01-32.99	50	40	70	238	331.6	FS600632	H3.0
HKD330R06W40M	33.00-33.99	50	40	70	238	331.6	FS600632	H3.0
HKD340R06W40M	34.00-34.99	50	40	70	252	343.8	FS600632	H3.0
HKD350R06W40M	35.00-35.49	50	40	70	252	343.8	FS600632	H3.0
HKD360R06W40M	35.50-36.00	50	40	70	252	343.8	FS600632	H3.0
HKD361R06W40M	36.01-36.99	50	40	70	266	356	FS600632	H3.0
HKD370R06W40M	37.00-37.99	50	40	70	266	356	FS600632	H3.0
HKD380R06W40M	38.00-38.99	50	40	70	280	368.3	FS600632	H3.0
HKD390R06W40M	39.00-39.99	50	40	70	280	368.3	FS600632	H3.0
HKD400R06W40M	40.00-40.99	50	40	70	280	368.3	FS600632	H3.0
HKD410R06W40M	41.00-41.99	50	40	70	280	368.3	FS600632	H3.0

King drilling

-7D



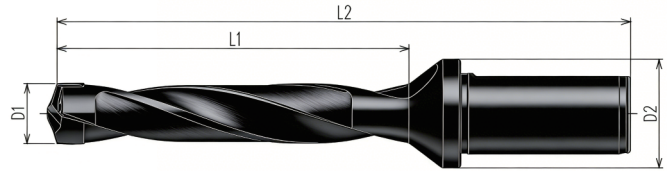
Designation	D1-D1(max)	D2	Handle dia.	Handle length	L1	L2	screw	wrench
HKD125R07W16M	12.50-12.99	23	16	45	104	163.6	FS252513	T5
HKD130R07W16M	13.00-13.50	23	16	45	104	163.6	FS252513	T5
HKD136R07W16M	13.51-13.99	23	16	45	112	170.6	FS253014	T6
HKD140R07W16M	14.00-14.50	23	16	45	112	170.6	FS253014	T6
HKD146R07W20M	14.51-14.99	30	20	50	120	189.1	FS253014	T6
HKD150R07W20M	15.00-15.87	30	20	50	120	189.1	FS253014	T6
HKD160R07W20M	15.88-16.99	30	20	50	136	204	FS253516	H1.5
HKD170R07W20M	17.00-17.50	30	20	50	144	211.1	FS253516	H1.5
HKD180R07W20M	17.51-18.00	30	20	50	144	211.1	FS253516	H1.5
HKD181R07W25M	18.01-18.99	35	25	56	152	228.7	FS304019	H2.0
HKD190R07W25M	19.00-19.49	35	25	56	160	235.8	FS304019	H2.0
HKD199R07W25M	19.50-19.99	35	25	56	160	235.8	FS304019	H2.0
HKD200R07W25M	19.00-20.49	35	25	56	168	242.9	FS304019	H2.0
HKD210R07W25M	20.50-21.00	35	25	56	176	250.2	FS304019	H2.0
HKD220R07W25M	21.01-22.00	35	25	56	176	250.2	FS304019	H2.0
HKD221R07W25M	22.01-22.99	35	25	56	184	257.1	FS304019	H2.0
HKD230R07W25M	23.00-23.49	35	25	56	192	264.3	FS304019	H2.0
HKD240R07W25M	23.50-24.00	35	25	56	192	264.3	FS304019	H2.0
HKD241R07W32M	24.01-24.99	40	32	60	200	283.4	FS405023	H2.5
HKD250R07W32M	25.00-25.49	40	32	60	208	290.6	FS405023	H2.5
HKD260R07W32M	25.50-26.00	40	32	60	208	290.6	FS405023	H2.5
HKD261R07W32M	26.01-26.99	40	32	60	216	297.8	FS405023	H2.5
HKD270R07W32M	27.00-27.49	40	32	60	224	304.8	FS405023	H2.5
HKD280R07W32M	27.50-28.00	40	32	60	224	304.8	FS405023	H2.5
HKD281R07W32M	28.01-28.99	40	32	60	232	312.9	FS506028	H3.0
HKD290R07W32M	29.00-29.49	40	32	60	240	319.2	FS506028	H3.0
HKD300R07W32M	29.49-30.00	40	32	60	240	319.2	FS506028	H3.0
HKD301R07W32M	30.01-30.99	40	32	60	248	326.4	FS506028	H3.0
HKD310R07W32M	31.00-31.49	40	32	60	256	333.5	FS506028	H3.0
HKD320R07W32M	31.50-32.00	40	32	60	256	333.5	FS506028	H3.0
HKD321R07W40M	32.01-32.99	50	40	70	272	365.8	FS600632	H3.0
HKD330R07W40M	33.00-33.99	50	40	70	272	365.6	FS600632	H3.0
HKD340R07W40M	34.00-34.99	50	40	70	288	379.8	FS600632	H3.0
HKD350R07W40M	35.00-35.49	50	40	70	288	379.8	FS600632	H3.0
HKD360R07W40M	35.50-36.00	50	40	70	288	379.8	FS600632	H3.0
HKD361R07W40M	36.01-36.99	50	40	70	304	394	FS600632	H3.0
HKD370R07W40M	37.00-37.99	50	40	70	304	394	FS600632	H3.0
HKD380R07W40M	38.00-38.99	50	40	70	320	408.3	FS600632	H3.0
HKD390R07W40M	39.00-39.99	50	40	70	320	408.3	FS600632	H3.0
HKD400R07W40M	40.00-40.99	50	40	70	320	408.3	FS600632	H3.0
HKD410R07W40M	41.00-41.99	50	40	70	320	408.3	FS600632	H3.0



Designation	D1-D1(max)	D2	Handle dia.	Handle length	L1	L2	screw	wrench
HKD125R08W16M	12.50-12.99	23	16	45	117	176.6	FS252513	T5
HKD130R08W16M	13.00-13.50	23	16	45	117	176.6	FS252513	T5
HKD136R08W16M	13.51-13.99	23	16	45	126	184.6	FS253014	T6
HKD140R08W16M	14.00-14.50	23	16	45	126	184.6	FS253014	T6
HKD146R08W20M	14.51-14.99	30	20	50	135	204.1	FS253014	T6
HKD150R08W20M	15.00-15.87	30	20	50	135	204.1	FS253014	T6
HKD160R08W20M	15.88-16.99	30	20	50	153	221	FS253516	H1.5
HKD170R08W20M	17.00-17.50	30	20	50	162	229.1	FS253516	H1.5
HKD180R08W20M	17.51-18.00	30	20	50	162	229.1	FS253516	H1.5
HKD181R08W25M	18.01-18.99	35	25	56	171	247.7	FS304019	H2.0
HKD190R08W25M	19.00-19.49	35	25	56	180	255.8	FS304019	H2.0
HKD199R08W25M	19.50-19.99	35	25	56	180	255.8	FS304019	H2.0
HKD200R08W25M	19.00-20.49	35	25	56	189	263.9	FS304019	H2.0
HKD210R08W25M	20.50-21.00	35	25	56	198	272.2	FS304019	H2.0
HKD220R08W25M	21.01-22.00	35	25	56	198	272.2	FS304019	H2.0
HKD221R08W25M	22.01-22.99	35	25	56	207	280.1	FS304019	H2.0
HKD230R08W25M	23.00-23.49	35	25	56	216	288.3	FS304019	H2.0
HKD240R08W25M	23.50-24.00	35	25	56	216	288.3	FS304019	H2.0
HKD241R08W32M	24.01-24.99	40	32	60	225	308.4	FS405023	H2.5
HKD250R08W32M	25.00-25.49	40	32	60	234	316.6	FS405023	H2.5
HKD260R08W32M	25.50-26.00	40	32	60	234	316.6	FS405023	H2.5
HKD261R08W32M	26.01-26.99	40	32	60	243	324.8	FS405023	H2.5
HKD270R08W32M	27.00-27.49	40	32	60	252	332.8	FS405023	H2.5
HKD280R08W32M	27.50-28.00	40	32	60	252	332.8	FS405023	H2.5
HKD281R08W32M	28.01-28.99	40	32	60	261	341.9	FS506028	H3.0
HKD290R08W32M	29.00-29.49	40	32	60	270	349.2	FS506028	H3.0
HKD300R08W32M	29.49-30.00	40	32	60	270	349.2	FS506028	H3.0
HKD301R08W32M	30.01-30.99	40	32	60	279	357.4	FS506028	H3.0
HKD310R08W32M	31.00-31.49	40	32	60	288	365.5	FS506028	H3.0
HKD320R08W32M	31.50-32.00	40	32	60	288	365.5	FS506028	H3.0
HKD321R08W40M	32.01-32.99	50	40	70	306	399.6	FS600632	H3.0
HKD330R08W40M	33.00-33.99	50	40	70	306	399.6	FS600632	H3.0
HKD340R08W40M	34.00-34.99	50	40	70	324	415.8	FS600632	H3.0
HKD350R08W40M	35.00-35.49	50	40	70	324	415.8	FS600632	H3.0
HKD360R08W40M	35.50-36.00	50	40	70	324	415.8	FS600632	H3.0
HKD361R08W40M	36.01-36.99	50	40	70	342	432	FS600632	H3.0
HKD370R08W40M	37.00-37.99	50	40	70	342	432	FS600632	H3.0
HKD380R08W40M	38.00-38.99	50	40	70	360	448.3	FS600632	H3.0
HKD390R08W40M	39.00-39.99	50	40	70	360	448.3	FS600632	H3.0
HKD400R08W40M	40.00-40.99	50	40	70	360	448.3	FS600632	H3.0
HKD410R08W40M	41.00-41.99	50	40	70	360	448.3	FS600632	H3.0

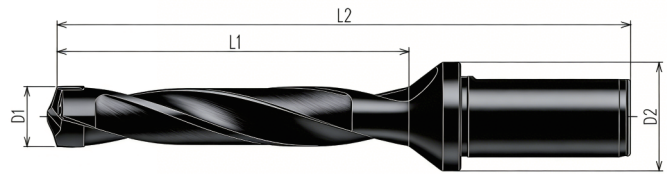
King drilling

- 10D



Designation	D1-D1(max)	D2	Handle dia.	Handle length	L1	L2	screw	wrench
HKD125R10W16M	12.50-12.99	23	16	45	143	202.6	FS252513	T5
HKD130R10W16M	13.00-13.50	23	16	45	143	202.6	FS252513	T5
HKD136R10W16M	13.51-13.99	23	16	45	154	212.6	FS253014	T6
HKD140R10W16M	14.00-14.50	23	16	45	154	212.6	FS253014	T6
HKD146R10W20M	14.51-14.99	30	20	50	165	234.1	FS253014	T6
HKD150R10W20M	15.00-15.87	30	20	50	165	234.1	FS253014	T6
HKD160R10W20M	15.88-16.99	30	20	50	187	255	FS253516	H1.5
HKD170R10W20M	17.00-17.50	30	20	50	198	265.1	FS253516	H1.5
HKD180R10W20M	17.51-18.00	30	20	50	198	265.1	FS253516	H1.5
HKD181R10W25M	18.01-18.99	35	25	56	209	285.7	FS304019	H2.0
HKD190R10W25M	19.00-19.49	35	25	56	220	295.8	FS304019	H2.0
HKD199R10W25M	19.50-19.99	35	25	56	220	295.8	FS304019	H2.0
HKD200R10W25M	19.00-20.49	35	25	56	231	305.9	FS304019	H2.0
HKD210R10W25M	20.50-21.00	35	25	56	242	316.2	FS304019	H2.0
HKD220R10W25M	21.01-22.00	35	25	56	242	316.2	FS304019	H2.0
HKD221R10W25M	22.01-22.99	35	25	56	253	326.1	FS304019	H2.0
HKD230R10W25M	23.00-23.49	35	25	56	264	336.3	FS304019	H2.0
HKD240R10W25M	23.50-24.00	35	25	56	264	336.3	FS304019	H2.0
HKD241R10W32M	24.01-24.99	40	32	60	275	358.4	FS405023	H2.5
HKD250R10W32M	25.00-25.49	40	32	60	286	368.6	FS405023	H2.5
HKD260R10W32M	25.50-26.00	40	32	60	286	368.6	FS405023	H2.5
HKD261R10W32M	26.01-26.99	40	32	60	297	378.8	FS405023	H2.5
HKD270R10W32M	27.00-27.49	40	32	60	308	388.8	FS405023	H2.5
HKD280R10W32M	27.50-28.00	40	32	60	308	388.8	FS405023	H2.5
HKD281R10W32M	28.01-28.99	40	32	60	319	399.9	FS506028	H3.0
HKD290R10W32M	29.00-29.49	40	32	60	330	409.2	FS506028	H3.0
HKD300R10W32M	29.49-30.00	40	32	60	330	409.2	FS506028	H3.0
HKD301R10W32M	30.01-30.99	40	32	60	325	403.4	FS506028	H3.0
HKD310R10W32M	31.00-31.49	40	32	60	336	413.5	FS506028	H3.0
HKD320R10W32M	31.50-32.00	40	32	60	336	413.5	FS506028	H3.0
HKD321R10W40M	32.01-32.99	50	40	70	357	459.6	FS600632	H3.0
HKD330R10W40M	33.00-33.99	50	40	70	357	450.6	FS600632	H3.0
HKD340R10W40M	34.00-34.99	50	40	70	378	469.8	FS600632	H3.0
HKD350R10W40M	35.00-35.49	50	40	70	378	469.8	FS600632	H3.0
HKD360R10W40M	35.50-36.00	50	40	70	378	469.8	FS600632	H3.0
HKD361R10W40M	36.01-36.99	50	40	70	399	489	FS600632	H3.0
HKD370R10W40M	37.00-37.99	50	40	70	399	489	FS600632	H3.0
HKD380R10W40M	38.00-38.99	50	40	70	420	508.3	FS600632	H3.0
HKD390R10W40M	39.00-39.99	50	40	70	420	508.3	FS600632	H3.0
HKD400R10W40M	40.00-40.99	50	40	70	420	508.3	FS600632	H3.0
HKD410R10W40M	41.00-41.99	50	40	70	420	508.3	FS600632	H3.0

-12D



Designation	D1-D1(max)	D2	Handle dia.	Handle length	L1	L2	screw	wrench
HKD125R12W16M	12.50-12.99	23	16	45	169	228.6	FS252513	T5
HKD130R12W16M	13.00-13.50	23	16	45	169	228.6	FS252513	T5
HKD136R12W16M	13.51-13.99	23	16	45	182	240.6	FS253014	T6
HKD140R12W16M	14.00-14.50	23	16	45	182	240.6	FS253014	T6
HKD146R12W20M	14.51-14.99	30	20	50	195	264.1	FS253014	T6
HKD150R12W20M	15.00-15.87	30	20	50	195	264.1	FS253014	T6
HKD160R12W20M	15.88-16.99	30	20	50	221	289	FS253516	H1.5
HKD170R12W20M	17.00-17.50	30	20	50	234	301.1	FS253516	H1.5
HKD180R12W20M	17.51-18.00	30	20	50	234	301.1	FS253516	H1.5
HKD181R12W25M	18.01-18.99	35	25	56	247	323.7	FS304019	H2.0
HKD190R12W25M	19.00-19.49	35	25	56	258	333.8	FS304019	H2.0
HKD199R12W25M	19.50-19.99	35	25	56	258	333.8	FS304019	H2.0
HKD200R12W25M	19.00-20.49	35	25	56	273	347.9	FS304019	H2.0
HKD210R12W25M	20.50-21.00	35	25	56	286	360.2	FS304019	H2.0
HKD220R12W25M	21.01-22.00	35	25	56	286	360.2	FS304019	H2.0
HKD221R12W25M	22.01-22.99	35	25	56	299	372.1	FS304019	H2.0
HKD230R12W25M	23.00-23.49	35	25	56	312	384.3	FS304019	H2.0
HKD240R12W25M	23.50-24.00	35	25	56	312	384.3	FS304019	H2.0
HKD241R12W32M	24.01-24.99	40	32	60	325	408.4	FS405023	H2.5
HKD250R12W32M	25.00-25.49	40	32	60	338	420.6	FS405023	H2.5
HKD260R12W32M	25.50-26.00	40	32	60	338	420.6	FS405023	H2.5
HKD261R12W32M	26.01-26.99	40	32	60	351	432.8	FS405023	H2.5
HKD270R12W32M	27.00-27.49	40	32	60	364	444.8	FS405023	H2.5
HKD280R12W32M	27.50-28.00	40	32	60	364	444.8	FS405023	H2.5
HKD281R12W32M	28.01-28.99	40	32	60	377	457.9	FS506028	H3.0
HKD290R12W32M	29.00-29.49	40	32	60	390	469.2	FS506028	H3.0
HKD300R12W32M	29.49-30.00	40	32	60	390	469.2	FS506028	H3.0
HKD301R12W32M	30.01-30.99	40	32	60	387.5	465.9	FS506028	H3.0
HKD310R12W32M	31.00-31.49	40	32	60	400	477.5	FS506028	H3.0
HKD320R12W32M	31.50-32.00	40	32	60	400	477.5	FS506028	H3.0
HKD321R12W40M	32.01-32.99	50	40	70	425	518.6	FS600632	H3.0
HKD330R12W40M	33.00-33.99	50	40	70	425	518.6	FS600632	H3.0
HKD340R12W40M	34.00-34.99	50	40	70	450	541.8	FS600632	H3.0
HKD350R12W40M	35.00-35.49	50	40	70	450	541.8	FS600632	H3.0
HKD360R12W40M	35.50-36.00	50	40	70	450	541.8	FS600632	H3.0
HKD361R12W40M	36.01-36.99	50	40	70	475	565	FS600632	H3.0
HKD370R12W40M	37.00-37.99	50	40	70	475	565	FS600632	H3.0
HKD380R12W40M	38.00-38.99	50	40	70	500	588.3	FS600632	H3.0
HKD390R12W40M	39.00-39.99	50	40	70	500	588.3	FS600632	H3.0
HKD400R12W40M	40.00-40.99	50	40	70	500	588.3	FS600632	H3.0
HKD410R12W40M	41.00-41.99	50	40	70	500	588.3	FS600632	H3.0

King drilling

The material of the tool holder is high-strength steel, such as DC53 H13, Toolsteel from Sweden, etc

