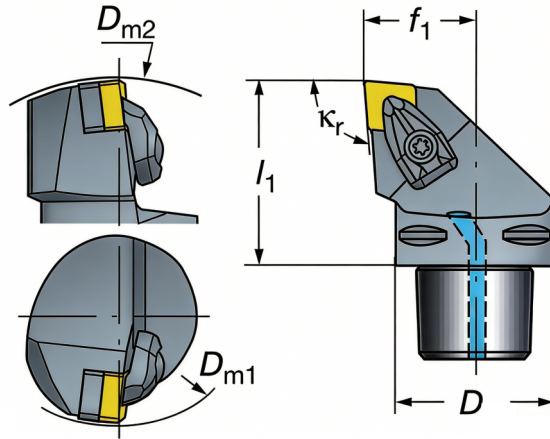
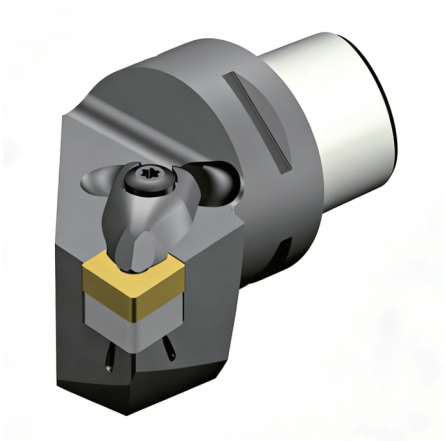


PSC Tooling



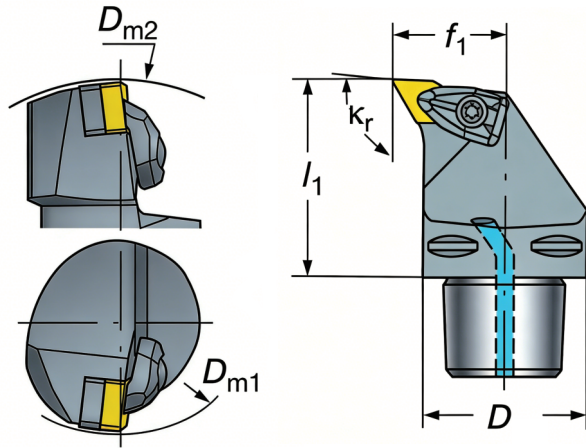
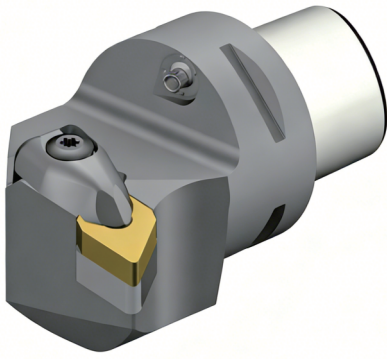
- ★ High positioning accuracy and repeatability
- ★ Excellent rigidity and torsional resistance
- ★ Modular design for high versatility and

DCLNR/L Kr 95°



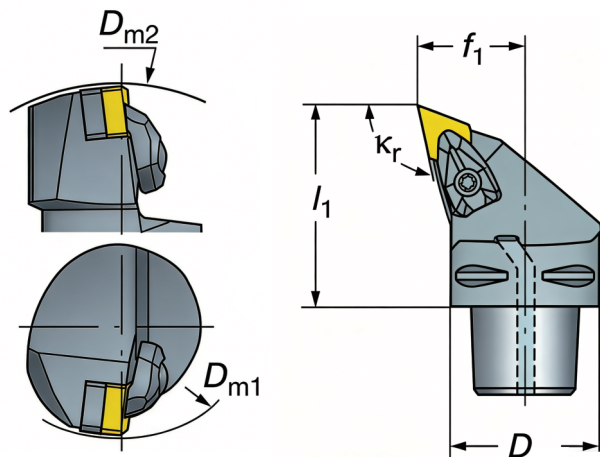
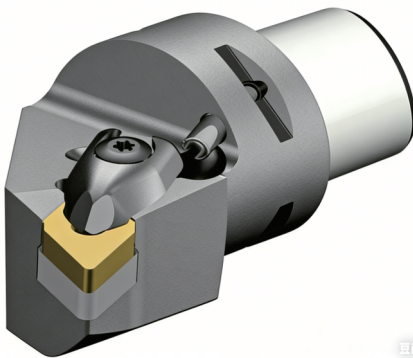
Designation	D	Dm1min	Dm2min	f1	l1	insert
PC4-DCLNR/L-050-CN12	40	110	140	27	50	CNM* 1204
PC5-DCLNR/L-060-CN12	50	110	165	35	60	CNM* 1204
PC6-DCLNR/L-065-CN12	63	110	190	45	65	CNM* 1204
PC4-DCLNR/L-055-CN16	40	115	140	27	55	CNM* 1606
PC5-DCLNR/L-060-CN16	50	115	165	35	60	CNM* 1606
PC6-DCLNR/L-065-CN16	63	115	190	45	65	CNM* 1606
PC8-DCLNR/L-080-CN16	80	115	250	55	80	CNM* 1606
PC5-DCLNR/L-060-CN19	50	110	165	35	60	CNM* 1906
PC6-DCLNR/L-065-CN19	63	110	190	45	65	CNM* 1906
PC8-DCLNR/L-080-CN19	80	110	250	55	80	CNM* 1906

DDUNR/L Kr 93°



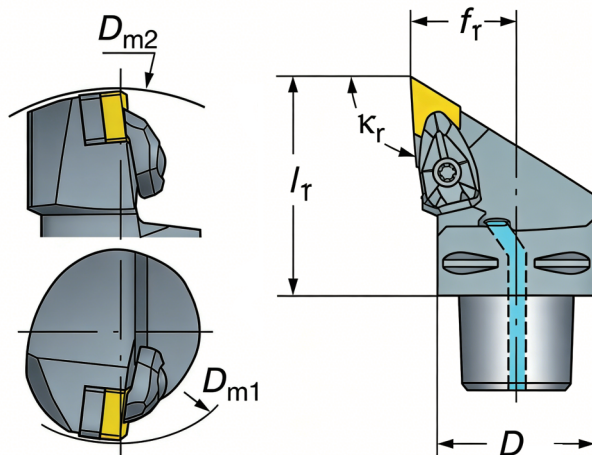
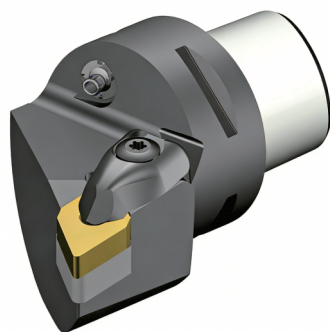
Designation	D	Dm1min	Dm2min	f1	l1	insert
PC5-DDUNR/L-060-DN15	50	110	165	35	60	DNM* 1506
PC6-DDUNR/L-065-DN15	63	110	190	45	65	DNM* 1506
PC8-DDUNR/L-080-DN15	80	110	250	55	80	DNM* 1506

DDHNR/L Kr 107.5°



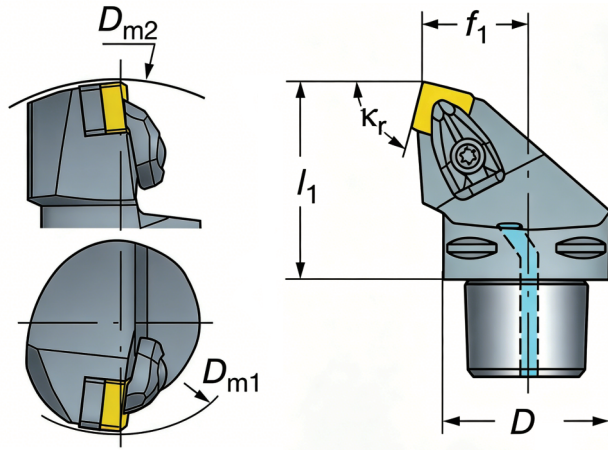
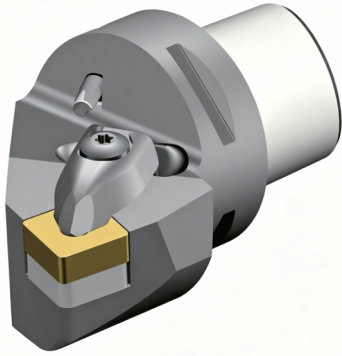
Designation	D	Dm1min	Dm2min	f1	l1	insert
PC4-DDHNR/L-055-DN15	40	110	140	27	55	DNM* 1506
PC5-DDHNR/L-060-DN15	50	110	165	35	60	DNM* 1506

DDJNR/L Kr 93°



Designation	D	Dm1min	Dm2min	f1	l1	insert
PC4-DDJNR/L-050-DN11	40	60	140	27	50	DNM* 1104
PC5-DDJNR/L-060-DN11	50	65	165	35	60	DNM* 1104
PC6-DDJNR/L-065-DN11	63	81	190	45	65	DNM* 1104
PC4-DDJNR/L-055-DN15	40	110	140	27	55	DNM* 1506
PC5-DDJNR/L-060-DN15	50	110	165	35	60	DNM* 1506
PC6-DDJNR/L-065-DN15	63	110	190	45	65	DNM* 1506
PC8-DDJNR/L-080-DN15	80	110	250	55	80	DNM* 1506

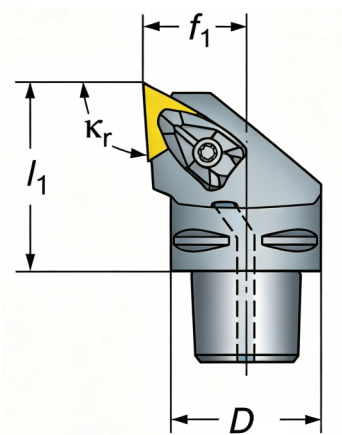
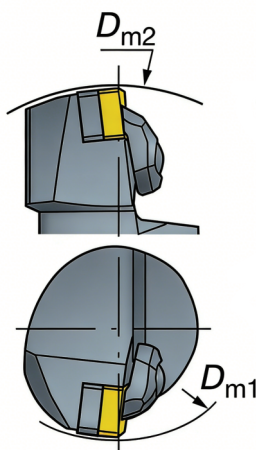
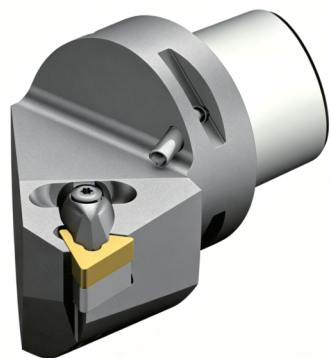
DSRNR/L Kr 75°



巨匠AI生成

Designation	D	Dm1min	Dm2min	f1	l1	insert
PC4-DSRNR/L-050-SN12	40	-	140	22	50	SNM*1204
PC5-DSRNR/L-060-SN12	50	-	165	27	60	SNM*1204
PC6-DSRNR/L-065-SN12	63	-	190	35	65	SNM*1204
PC5-DSRNR/L-060-SN15	50	-	165	27	60	SNM*1506
PC6-DSRNR/L-065-SN15	63	-	190	35	65	SNM*1506
PC6-DSRNR/L-065-SN19	63	-	190	35	65	SNM*1906
PC8-DSRNR/L-080-SN19	80	-	250	45	80	SNM*1906
PC8-DSRNR/L-080-SN25	80	-	250	45	80	SNM*2507

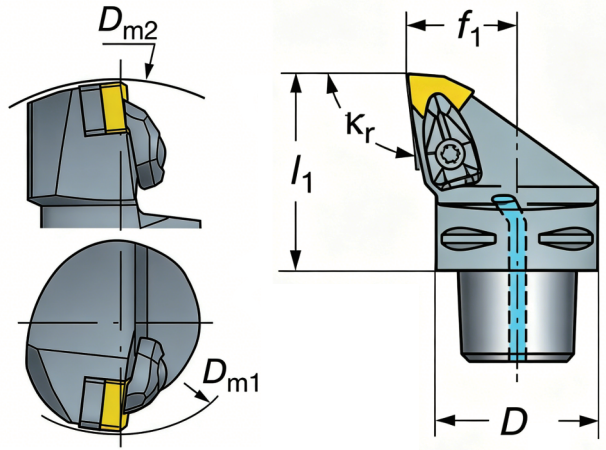
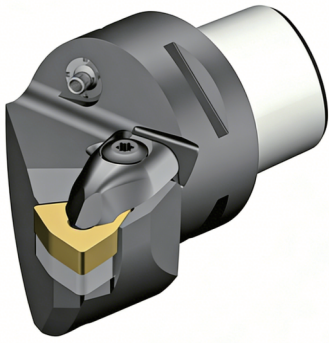
DTJNR/L Kr 93°



豆圖AI生成

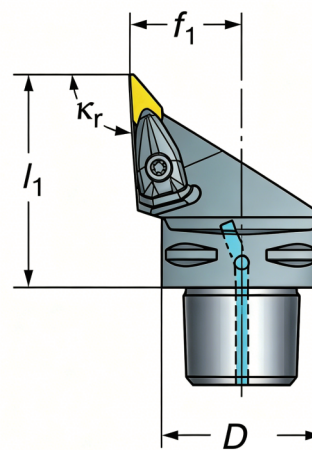
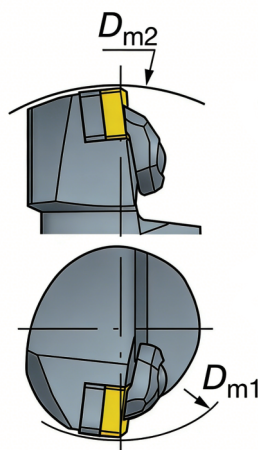
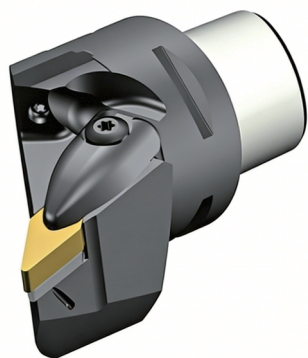
Designation	D	Dm1min	Dm2min	f1	l1	insert
PC4-DTJNR/L-050-TN16	40	110	140	27	50	TNM* 1604
PC5-DTJNR/L-060-TN16	50	110	165	35	60	TNM* 1604
PC6-DTJNR/L-065-TN16	63	110	190	45	65	TNM* 1604
PC4-DTJNR/L-050-TN22	40	110	140	27	50	TNM* 2204
PC5-DTJNR/L-060-TN22	50	110	165	35	60	TNM* 2204
PC6-DTJNR/L-065-TN22	63	110	190	45	65	TNM* 2204

DWLNR/L Kr 95°



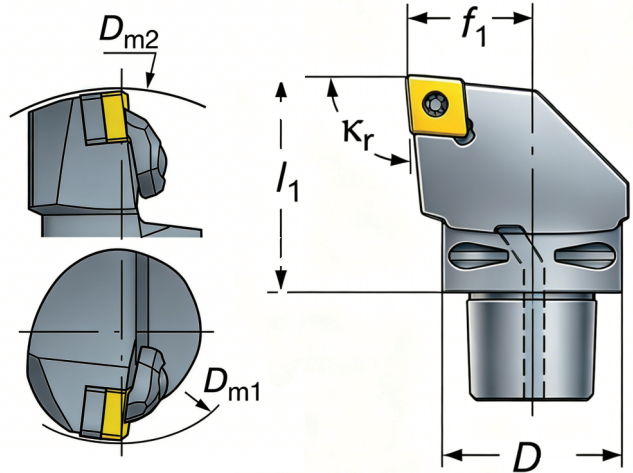
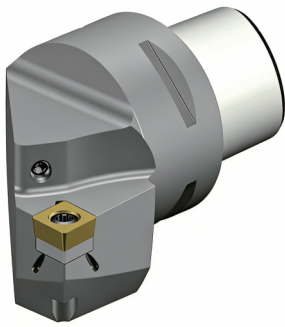
Designation	D	Dm1min	Dm2min	f1	l1	insert
PC4-DWLNR/L-050-WN06	40	60	140	27	50	WNM* 0604
PC5-DWLNR/L-060-WN06	50	65	165	35	60	WNM* 0604
PC6-DWLNR/L-065-WN06	63	81	190	45	65	WNM* 0604
PC4-DWLNR/L-050-WN08	40	110	140	27	50	WNM* 0804
PC5-DWLNR/L-060-WN08	50	110	165	35	60	WNM* 0804
PC6-DWLNR/L-065-WN08	63	110	190	45	65	WNM* 0804
PC8-DWLNR/L-080-WN08	80	110	250	55	80	WNM* 0804

DVJNR/L Kr 93°



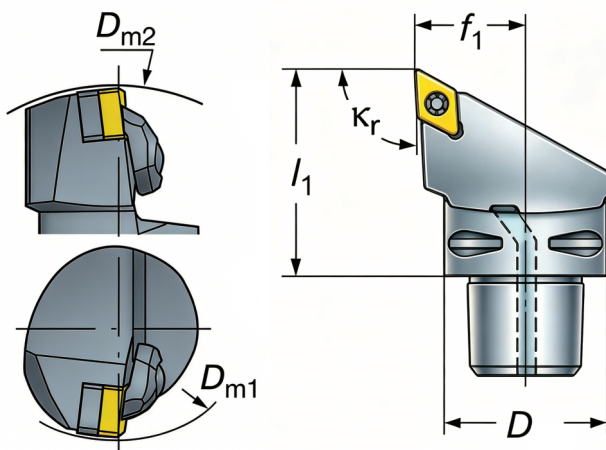
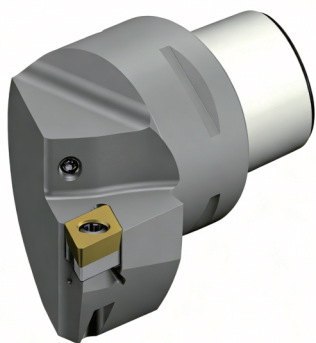
Designation	D	D _{m1} min	D _{m2} min	f ₁	l ₁	insert
PC4-DVJNR/L-062-VN16	40	60	152	27	70	VNM*1604
PC5-DVJNR/L-065-VN16	50	65	170	35	50	VNM*1604
PC6-DVJNR/L-065-VN16	63	81	190	45	50	VNM*1604
PC8-DVJNR/L-080-VN16	80	100	250	55	50	VNM*1604

SCLCR/L Kr 95°



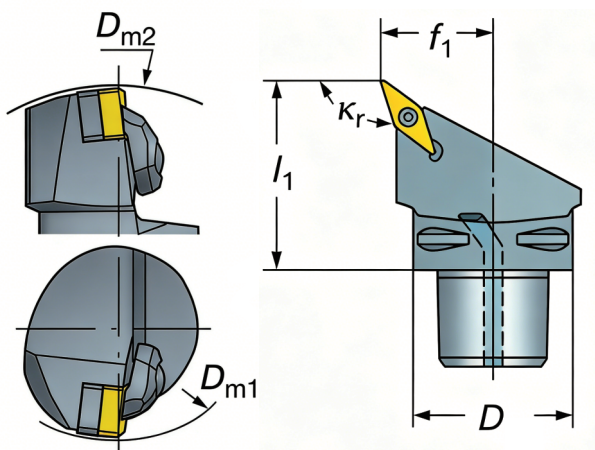
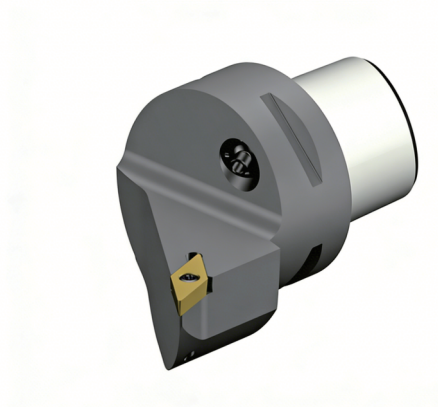
Designation	D	Dm1min	Dm2min	f1	l1	insert
PC3-SCLCR/L-040-CC09	32	130	116	22	40	CC*T09T3
PC4-SCLCR/L-050-CC09	40	130	140	27	50	CC*T09T3
PC5-SCLCR/L-060-CC09	50	130	165	35	60	CC*T09T3
PC6-SCLCR/L-065-CC09	63	130	190	45	65	CC*T09T3
PC3-SCLCR/L-040-CC12	32	125	116	22	40	CC*T1204
PC4-SCLCR/L-050-CC12	40	125	140	27	50	CC*T1204
PC5-SCLCR/L-060-CC12	50	125	165	35	60	CC*T1204
PC6-SCLCR/L-065-CC12	63	125	190	45	65	CC*T1204

SDJCR/L Kr 93°



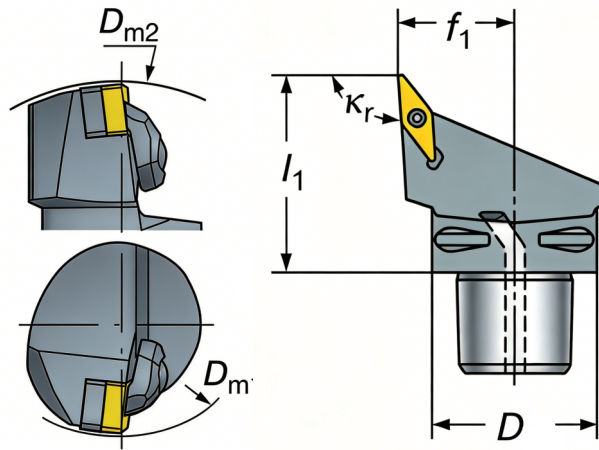
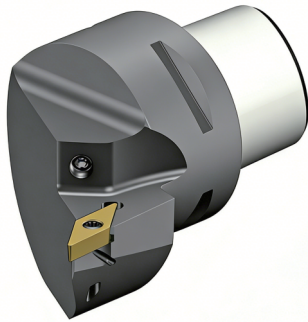
Designation	D	D _{m1} min	D _{m2} min	f ₁	l ₁	insert
PC3-SDJCR/L-040-DC07	32	70	116	22	40	DC*T0702
PC4-SDJCR/L-050-DC07	40	70	140	27	50	DC*T0702
PC3-SDJCR/L-040-DC11	32	244	135	22	40	DC*T11T3
PC4-SDJCR/L-050-DC11	40	246	140	27	50	DC*T11T3
PC5-SDJCR/L-060-DC11	50	250	165	35	60	DC*T11T3
PC6-SDJCR/L-065-DC11	63	250	190	45	65	DC*T11T3

SVHBR/L Kr 107.5°



Designation	D	D _{m1} min	D _{m2} min	f ₁	l ₁	insert
PC3-SVHBR/L-22040-11	32	55	116	22	40	VB*T1103
PC4-SVHBR/L-27050-11	40	55	140	27	50	VB*T1103
PC4-SVHBR/L-27050-16	40	95	140	27	50	VB*T1604
PC5-SVHBR/L-35060-16	50	95	165	35	60	VB*T1604
PC6-SVHBR/L-45065-16	63	95	190	45	65	VB*T1604

SVJBR/L Kr 93°



Designation	D	Dm1min	Dm2min	f1	l1	insert
PC3-SVJBR/L-22040-11	32	105	116	22	40	VB*T1103
PC4-SVJBR/L-27050-11	40	105	140	27	50	VB*T1103
PC4-SVJBR/L-27050-16	40	155	140	27	50	VB*T1604
PC5-SVJBR/L-35060-16	50	155	165	35	60	VB*T1604
PC6-SVJBR/L-45065-16	63	155	190	45	65	VB*T1604

